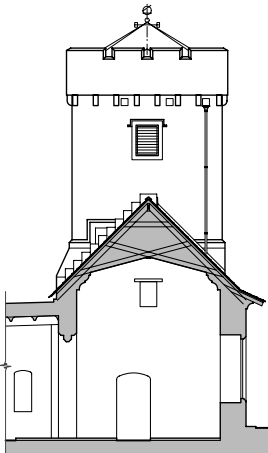


† St Michael's Church †

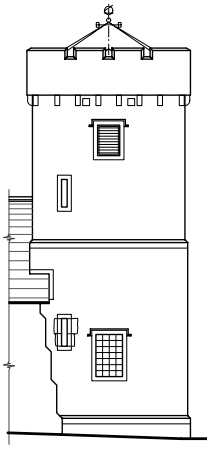
SHAP with SWINDALE



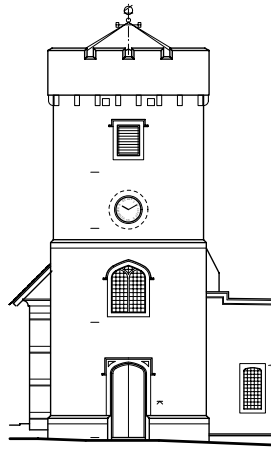
The Future?



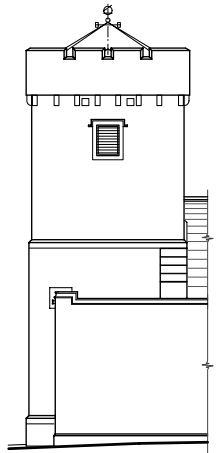
EAST



NORTH



WEST



SOUTH

ESSENTIAL REPAIRS 2005



Brief Description of the Building

The church is listed Grade 2 and comprises Nave and Chancel with South Aisle, South Chapel, Tower to the west and Vestry and Organ Chamber to the north. The earliest original building fabric, dating from the early thirteenth century, is the south Arcade to the Nave; the south Aisle was widened later and the lower courses are medieval. The Tower was built in 1828 on the site of an earlier structure. In 1898 the new Chancel replaced an earlier structure of 1765. At that time the Vestry was rebuilt, the Organ Chamber added and the South Aisle extended westward to form the Chapel. This work included the demolition and rebuilding of the upper two thirds of the south aisle wall and the restoration of the north wall of the Nave, according to plans by G.D. Oliver, Architect of Carlisle.

Due to its importance Shap Church has been offered one of the largest grants ever made to a grade 2 listed church in Cumbria.

Urgent Work to the Lead Roof of the South Aisle

Increasingly over recent years repairs to the roof of the South Aisle had been a major cost to the church. During recent investigating it was revealed that the roof had been repaired many times over the past 50 years and by 2000 the point had been reached for the entire roof to be re-laid. This will be done under a protective roof in new lead to current conservation standards, incorporating new ventilation details to prevent decay occurring under the new lead sheets.



Repairs to the Tower Floor Timbers

The Tower has suffered from damp penetration for many years. In 2000 it was discovered that some joists required urgent repair and replacement where they are built into the wet masonry of the Tower. A Boron based treatment will be drilled into the embedded timbers and all other timbers sprayed.

Slating to the Chapel and Chancel

The slates are a pale Westmorland green laid in diminishing courses, the lower slates are very long and the smallest 'peggies' are about 8" long. The roof will be laid in almost exactly the same courses as it was originally.

Each gable parapet wall rises above the roof level, with large coping stones on the top, and a small area of wall beneath. This is a common Victorian design, but it is also a point of weakness where water can enter the interior of the church. A new lead detail will prevent water from entering the gable walls and create a watertight junction with the slate roofs.

The Nave, Chapel and Chancel roof slates have not been re-laid since the alterations in 1898, and the nails are suffering from rust; some are considerably bent due to the sheer weight of the slates.



ESSENTIAL REPAIRS 2005

Repairs to the Tower Stonework

One reason why damp conditions have prevailed in the Tower and contributed to the rot in the floor and roof timbers has been the inappropriate use of cement mortar. From the beginning of the 20th century, until recently, cement mortars were used in the repair of historic buildings. This was due to the rise in the use of cement in modern construction, brought by the railways from the mid nineteenth century onwards, with devastating effects.

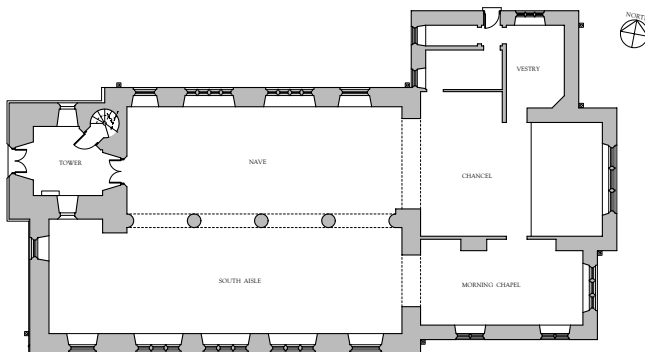


The wall tops had been rebbed in cement and the entire wall repointed probably in the early twentieth century. As part of the repairs all cement mortar will be removed from the walls and the joints will be deeply packed out and repointed in a pure lime mortar, without the addition of any cement. This method has a number of benefits:

- *It allows any water which gets into the wall to evaporate outwards;*
- *it is permeable, soft and flexible;*
- *it allows the mass masonry of the Tower to move slightly as it has always done;*
- *and it will allow any future repair work to be carried out without damaging the stones as it can be removed easily and any stonework recycled.*

Funding the Repairs

The initial investigation work has been funded by a generous grant allocation from English Heritage. The Church Council are seeking contributions from the Veneziana Trust, the Historic Churches Preservation Trust and the Council for the Care of Churches, amongst others. The Church Council will also contribute a significant sum from their own fundraising within the community and your assistance is valued highly.



GROUND FLOOR PLAN

The Legacy

As part of the grant a Maintenance Plan has been drawn up and this should keep the building in a state of equilibrium and minimise the necessity to carry out expensive repair works in future. An Access Audit has also been prepared and this is requirement of the new regulations under the Disability Discrimination Act.

A contractor will be selected in April and this phase of the works is due to finish in November 2005. The church will continue fund raising for these next phases of repairs as part of an ongoing programme of repairs.



Elaine Rigby Architects

33 Chapel Street, Appleby-in-Westmorland, Cumbria CA16 6QR Tel: 017683 52572

ST MICHAEL'S CHURCH AND ITS (UNCERTAIN?) FUTURE? COULD IT CLOSE SOON?

As a 'comer in', I may be the wrong person to write this piece on the future of our (your) church. However, during the past 3 years my family have come to love Shap, its people, its 'village' life, the community spirit, the school pupils and staff and the Church (both the building and its people). Everyone in Shap has made us feel welcome, so I hope I can speak to you all as a friend; I am also the newest (i.e. most junior) Churchwarden.

The Church Council is about to start a major repair works on the church roof and tower. We have been offered a large grant of over £100,000 from English Heritage, but, based on current estimates, the church members have to find a further £20,000 to complete the work. With your help we also hope to carry out other improvements to the church in future, including toilet facilities.

What Does it Costs to keep St Michael's open each Year

The cost of keeping the church open in 2004 was £21,000. For the past 10 years our income has not met our expenditure. Subsequently, all capital reserves have been used up.

If you do not attend church regularly you may well ask what this has to do with you?

- *Have you in the last 12 months attended a funeral, a wedding or a baptism there?*
- *Have you been to services on Remembrance Day, Christmas Eve, Mothering Sunday, Easter or the Remembering Service;*
- *Have you attended one of the special children's services like Christingle or School Leavers Day?*

You may find that St Michael's appears in your calendar at least once annually, if not more. Would you be concerned if you thought it was going to close? This could happen in the near

future quite easily, unless 'someone' does something. As the 'Lottery' advert says, "IT COULD BE YOU".

Could the 'Someone' who does Something be You?

Shap church receives nothing from the Government or Central Church Funds; our few dedicated supporters raise it all, some contribute by having an envelope or help in other ways or attending fundraising events for example.

The Congregation of St Michael's needs your help. What can I do?

1. *Give a 'one off' donation towards the costs of the building repairs. See centre pages for details.*
2. *If you are an 'envelope' or Covenant contributor already, please review your giving; ask yourself how many years has it stayed at this level, what would this amount buy at the Co-op/the pub, is keeping YOUR church worth a bit/a lot more?*
3. *Become an 'envelope' or Covenant contributor, just ask for details. Remember, if you pay tax and you Covenant we can get back 28p in the £ from the Government (last year we reclaimed £1,830 tax).*
4. *If you don't contribute at the moment, would you like to help? Think about the times in the future when you might value an Anglican church in Shap, such as the one-off events, Baptisms, Weddings or Funerals.*
5. *Please attend the Annual General Meeting on Sunday, 17th April, after 11am service, and please do what you can to help.*

If you can help in any way at all please contact one of the Churchwardens, details below.

PLEASE HELP US TO KEEP YOUR CHURCH DOORS OPEN

Sam Marsden. The Vicarage, Shap, Cumbria CA10 3LB. Tel: 01931 716232
Jean Jackson. The Hermitage, Shap, Cumbria CA10 3LX. Tel: 01931 716671